

**PREVIOUSLY SENT**



THE  
PRESS  
AGENCY  
INC

**Press Release**

July 9, 2013



**High-End Excellence!**

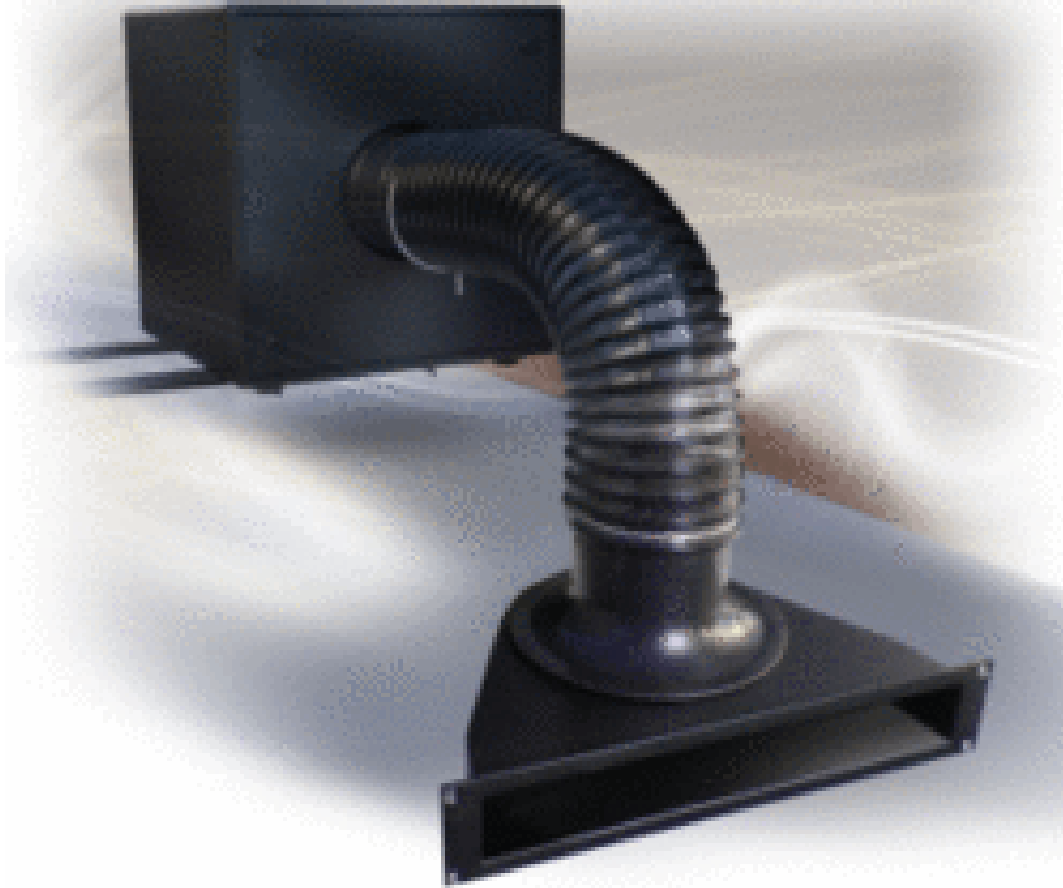


James Loudspeaker, an industry leader and innovator in both high-end residential and commercial speaker solutions. (indoor, outdoor, and marine) Manufacturing since 1999, they take pride in sound innovation, unprecedented custom work, flawless sonic reproduction and excellence in design and quality.

All James products are specially designed with minimal visual presence to interior or landscape designs. The result is solid sonic precision in the beauty of your surroundings.

James offers exemplary factory support, and is sold only through the very best custom installation dealers. Along with James, we will provide you with the best dealer experience before, during, and years after the sale.

## **PowerPipe Subwoofers**



The Power Pipe subwoofer was created to fill a void that custom integrators have been longing for since the beginning; how to fill a space with big sound without disturbing the surrounding motif created by interior designers. With that one hurdle in mind, the engineers at James set out to create the worlds finest subwoofer and keep it hidden from everyone. The finished product resulted in what can only be described as a "game changer" for the CE industry. The Power Pipe has quickly become one of the most sought after components in the world of high end audio/video installation projects.

## **In Cabinetry**



**In Floor**



**In Ceiling**



## James - The Inventor of the Landscape Speaker



While most would agree that the experience of listening to an audiophile grade sound system is one of life's many pleasures, the fact remains that very few are ever capable of recreating this experience in an outdoor

setting. The engineers at James set out to make this experience a reality, and with that goal in mind the original Landscape System was born. Here we are almost 10 years into the evolution of the Landscape System, and without question the latest generation has been our greatest endeavor to date.

## Top of the Line - The 129AT70 Bi-Amped Landscape System For Large / Very Large Areas



Our top of the line landscape system was formulated in order to provide maximum coverage within a large area, while also providing each of those areas with uncompromising audio performance combined with minimal visual impact.

The 129AT70 features the following items:

- (8) 62AT70 satellite speakers,**
- (1) 121ST70 subwoofer,**
- (1) M1000 amplifier,**
- (1) CX602V amplifier and**
- (1) DSP4 module.**



Our new 62AT70 landscape speakers now feature a coaxially mounted 1" aluminum dome tweeter design over a proprietary high-excursion 6" woofer, with a built in crossover network and 100W/70V transformers. These

outdoor speakers play at significantly higher volumes while still maintaining a smooth frequency response of 70-20kHz.

The 121ST70 landscape subwoofer was designed by James to provide larger coverage for systems that needed extra SPL. It features a proprietary high excursion 12" aluminum driver mounted within a fully sealed aluminum band-pass enclosure.

## **The 119AT70 Bi-Amped Landscape System For Medium/Large Areas**





**Our new 42AT70 landscape speakers now feature a coaxially mounted .75" aluminum dome tweeter design over a proprietary high-excursion 4" woofer, with a built in crossover network and 50W/70V transformers. These outdoor speakers play at significantly higher volumes while still maintaining a smooth frequency response of 80-20kHz.**

**The 121ST70 landscape subwoofer was designed by James to provide larger coverage for systems that needed extra SPL. It features a proprietary high excursion 12" aluminum driver mounted within a fully sealed aluminum band-pass**

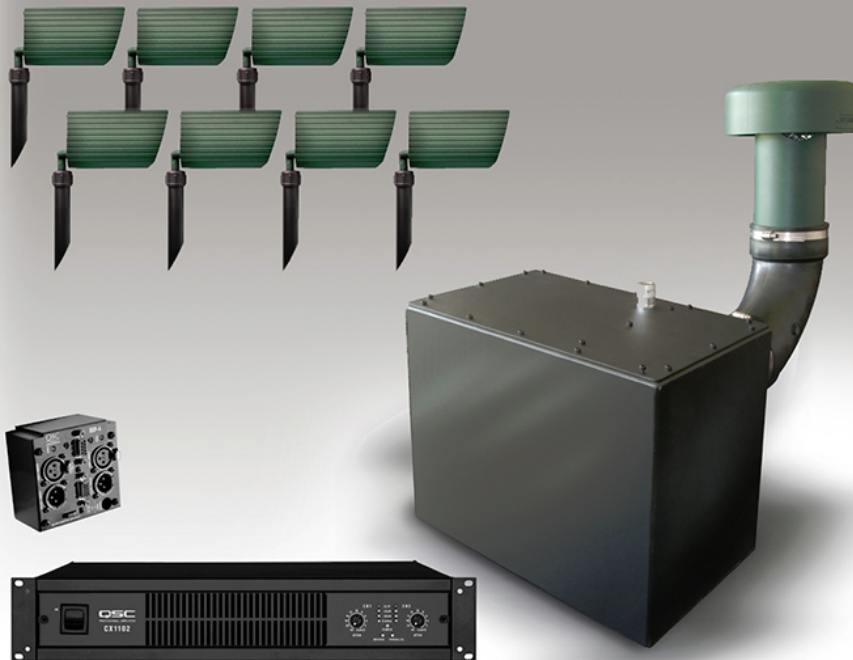
**The 119AT70 features the following items:**

**(8) 42AT70 satellite speakers,**

- (1) 121ST70 subwoofer,
- (1) M1000 amplifier,
- (1) CX302V amplifier and
- (1) DSP4 module



## The 109AT70 Landscape System For Small / Medium Areas



Our mid-tier landscape system continues to incorporate upper end All-Terrain satellite speakers but was packaged with a budget in mind. It still provides

generous coverage for small to medium areas while also providing each of those areas with uncompromising audio performance combined with minimal visual impact.

The 109AT70 features the following items:

- (8) 32AT70 satellite speakers,
- (1) 101ST70 subwoofer,
- (1) CX302V amplifier and
- (1) DSP4 module.



Our new 32AT70 landscape speakers now feature a coaxially mounted .75" aluminum dome tweeter design over a proprietary high-excursion 3" woofer, with a built in crossover network and 30W/70V transformers. These outdoor speakers do play at higher volumes while still maintaining a smooth

frequency response of 100-20kHz.

The 101ST70 was the first landscape subwoofer designed by James for our landscape systems. It features a proprietary high excursion 10" aluminum driver mounted within an aluminum sealed band-pass enclosure.

## **The 107GS70 Landscape System For Small / Patio Areas**



**Our entry-level landscape system has been packaged with the budget conscious in mind. It still provides liberal coverage for smaller areas or patios while also lending those areas with the kind of audio performance never before achieved with basic outdoor speakers, yet these Malibu-style satellite speakers still leave minimal visual impact on your surroundings.**

**The 107GS70 features the following items:**

- (6) 31ODS70 satellite speakers,**
- (1) 101ST70 subwoofer,**
- (1) CDi1000 amplifier with built-in DSP processor**

**Our newly designed 31ODS70 landscape speakers now feature a proprietary high-excursion full range 3"**

driver, with a built in crossover network and 20W/70V transformers. These Malibu-style outdoor speakers feature a die-cast housing and powder coated wire mesh front screen to protect the driver. We continue to offer this classic for its styling and ability to blend into any surrounding.



The 101ST70 was the first landscape subwoofer designed by James for our landscape systems. It features a proprietary high excursion 10" aluminum driver mounted within an aluminum sealed band-pass enclosure.

## 2.75" Shallow Depth High-Output LCR Sound Bar



- (6) 6" (152mm) Low-Profile Aluminum Woofers
- (12) 1" (25mm) Beryllium Dome Tweeters

The SPL618LCR (shown at the top of this page) is our premier shallow depth, high output LCR sound-bar for large format video displays. With James' unique shallow driver technology and quad tweeter array, the SPL618LCR has been engineered to provide big sound for those large displays. At only 2.75" (70mm) deep, this unit packs a powerful punch!

The cabinet design features all aircraft aluminum construction for strength, sonic performance and suitability for outdoor/marine applications. A stainless steel grille provides protection to the components yet has a subdued visual effect, designed to be as unobtrusive as possible.



[Click here to check out the huge Soundbar offering from James, dozens of models from 4" to only 1.5" deep!](#)

## SA - Small-Aperture Collection



**EXPERIENCE 38HZ  
INCONSPICUOUSLY.  
Small Aperture Series  
minimal 3" opening  
full range  
3-way system  
AMAZING!**

**3-Way Full-Range In-Ceiling Speaker w/3" Grille**

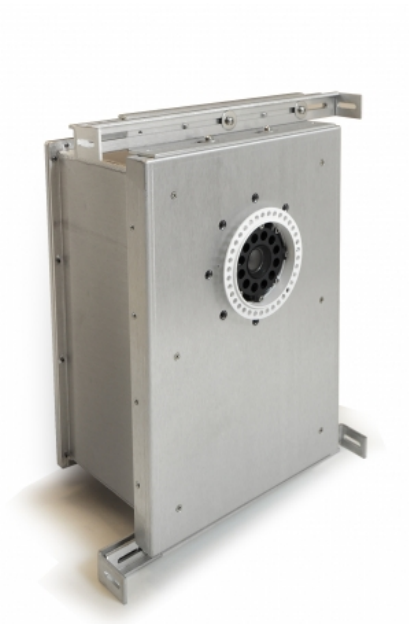
The new "Small-Aperture" collection of in-ceiling and in-wall systems provides high volume levels, deep bass and wide coverage from small



3" or 4" flush and seamless round or square openings. James' SA Series are essentially hidden, yet provide the complete musical experience. Each unit has been engineered to integrate a multitude of designer demands, the no compromise design solution for the

meticulously artful and audio enthusiast alike.

Each system is a true full range, 3-way design with a 0.75" (19mm) aluminum dome tweeter, 2" (50mm) aluminum midrange driver and a 6" (135mm) aluminum mini PowerPipe® subwoofer, all concentrically mounted.



Designed for whole-house audio installations, especially suited for high end homes where critical listening is paramount and aesthetics are equally as vital.

The point source mid/high module provides excellent off-axis response and the hidden mini PowerPipe® woofer generates bass down to 38Hz for a





truly full-range music experience, yet the user only sees a 3" round or square seamless flush opening. The grille configuration has industry standard mounting and accepts high-end lighting trim kits to allow the speaker to match

lighting fixtures in the same installation.

Check out the GeekTV coverage from CEDIA - <http://www.youtube.com/watch?v=2EHIQ2oJals>  
(sorry about the embedded commercials, please watch to the end)

## Check Out All The Solutions!



## Contact Us

The media has called James Loudspeaker, the Rolls Royce of the custom speaker industry.

This Napa Valley based audio engineering firm designs all of its



products from the ground up, using aircraft aluminum backboxes and baffles for all the full range in walls, in ceiling, and in wall woofers.

James products can be customized at the factory for finishes, colors and even internal components, usually within a few days, allowing James dealers to offer a very custom and specialized approach to their installations.

Please contact me if you would like to find out more and as always, continued thanks for all your ongoing support!

Cheers,  
Warren

## PS - Press Releases Archived



We've been asked on several occasions by dealers to start archiving past copies of the weekly Press Release so they can easily refer back to them. [To check out previous Press Releases, just click on the image above.](#)

They can also be accessed by going to the Press Release section of our website.

Please note that any specials or pricing mentioned within the archives are not updated and as such may not be current when viewed.

**As always, we welcome your feedback!**



## **Contact Us**

**The Press Agency Inc.**  
53 Cranwell Court SE  
Calgary, Alberta | T3M 0B7  
Tel. 403-401-4278  
Skype - warrenpressagency  
[www.pressagencyinc.com](http://www.pressagencyinc.com)